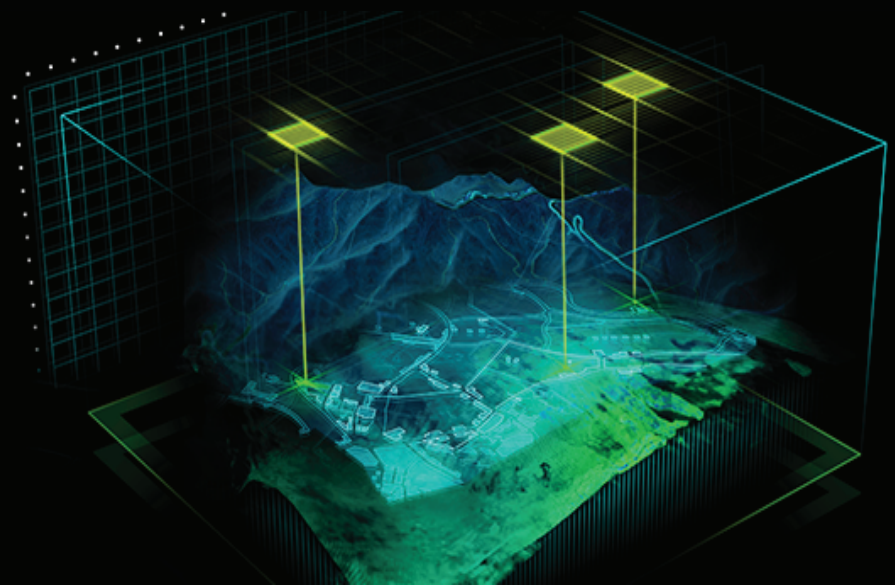


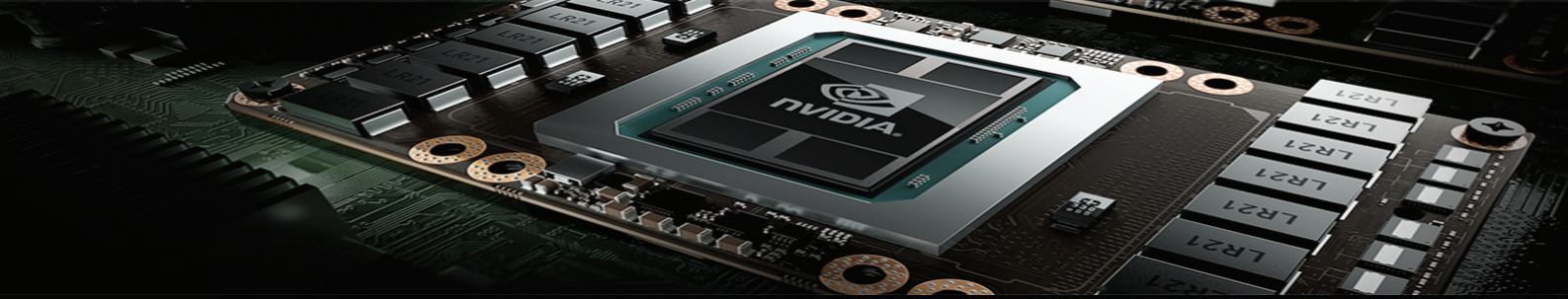
# Rugged GPGPU Based Computer (HPEC)

GP-RC7W



- Rugged COTS computer with Intel® Quad Core- i7 processor
- NVIDIA® GPUGTX 1050 Ti supports CUDA 768 ,independent displays by 4 x DP/DVI/HDMI
- 18-36V DC MIL-STD-1275/704 Power supply with Voltage transient protections
- Design for reliability under demanding MIL-STDs Thermal Shock, Vibration, Humidity/EMI/EMC conditions
- Rugged Small Form Factor Conduction-Cooled aluminum chassis with Amphenol MIL-DTL-38999 connectors
- Operating temperature range : -40°C to +70°C
- Environmentally Sealed (IP67)
- MIL-STD 810G, MIL-STD 461, MIL-STD-1275, MIL-STD 704 compliant





# Model: GP-RC7W



**GEFORCE<sup>®</sup>**  
**GTX 1050Ti**

**POWERED BY**

**NVIDIA**  
**GEFORCE<sup>®</sup>**  
**GTX**



## Specification:

### Processor & RAM:

Intel® 7th Gen. KabyLake-H® Core™ i7-7820EQ Quad Core Processor  
DDR4-2133 up to 32GB RAM

### GPU:

NVIDIA® GeForce™ GTX 1050Ti (768 CUDA Cores)

### Video Input:

4x Independent Display Ports /HDMI /DVI outputs (Outputs selection by request)

### Frame Grabber:

Single or Dual channel HD-SDI Frame Grabber with flexible capture resolution up to 1080p30/1080i 60

### Network interface:

2x Gigabit Ethernet (1 x Intel I210-IT & 1 x I219-LM GbE)  
Optional extension for WiFi, BT, 4G LTE, GPS

### Interfaces:

1x RS232/422 /485; 2x RS232, 4x USB 2.0 (2x extra USB3.0 ports optional)  
GPIO 6 in /2 out with isolation  
All I/O's through MIL 38999 Connectors

### Storage:

Up to 4TB Solid State Internal Storage

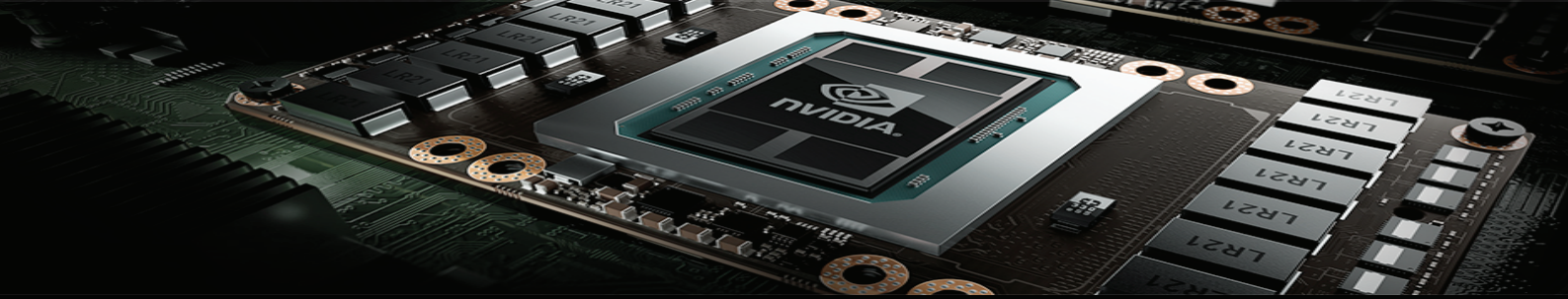
### Power Requirements:

Wide range input +18V to +36V DC  
Reverse polarity protection. Overload protection and transient voltage suppression

### Environmental:

Full IP67 water dust proof, anti-corrosion housing  
Extended operating temperature -40°C to +70°C  
Storage temperature : -50°C to 85°C  
Operational Altitude (20,000ft) MIL-STD-810G, Method 500.5, Procedure II.  
Humidity: MIL-STD-810G, Method 507.5, and Procedure II.  
Sand and Dust: MIL-STD-810G, Method 510.5 Procedure I (Dust) & II (Sand).  
Fungus: MIL-STD-810G, Method 508.6.  
Vibration: MIL-STD-810G method 514.6, procedure I.  
Mechanical Shock: MIL-STD-810G, Method 516.6 Procedure I & V.  
EMC /EMI : MIL-STD-461F CE101,CE102, CS101, CS114, CS116, RE101,RE102.  
Designed to comply with MIL-STD-704 and MIL-STD-1275





# Model: GP-RC7W



**GEFORCE®  
GTX 1050Ti**

**POWERED BY**



## Mechanical Drawings:

