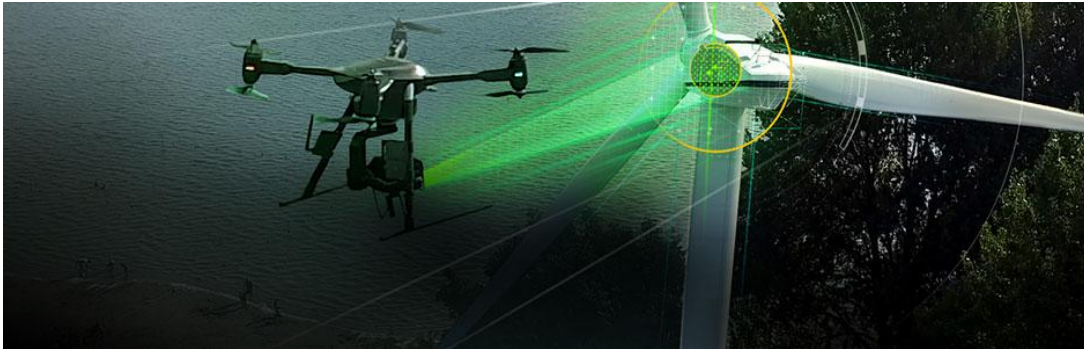


Military Grade Rugged PC

Model: SD-RPTX2



DESIGNED TO MEET ALL CHARACTERISTICS OF
MILITARY STANDARDS



SDK Embedded Systems Ltd. 11 HaHarash St., Southern Industrial zone Ashkelon 78783, Israel

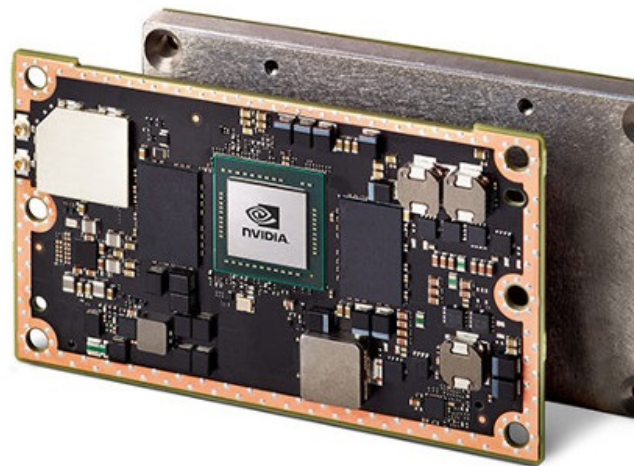
Tel: +972-722-122-017 | Fax: +972-722-509-126 | Email: sales@sdksys.com

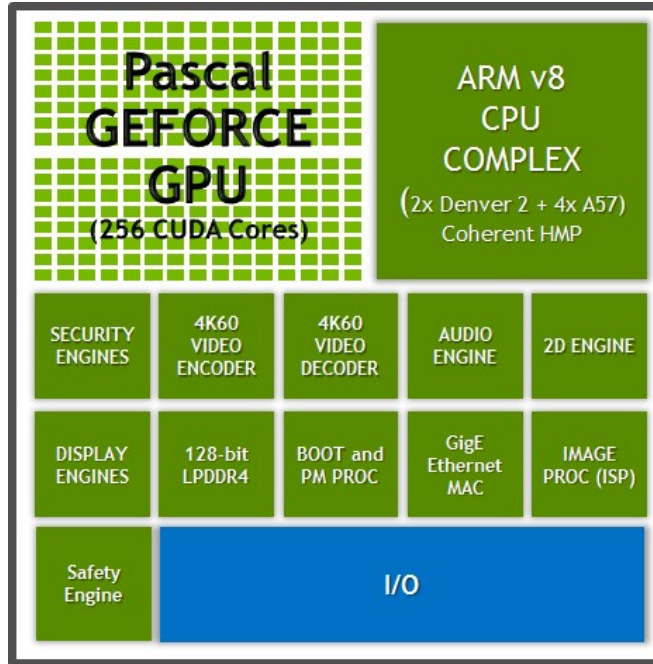
The SD-RPTX2 rugged PC is ideal for wide range applications in Military, Navy, Maritime Communications, Robotics, Heavy Industrial, Transportation and Energy industries.



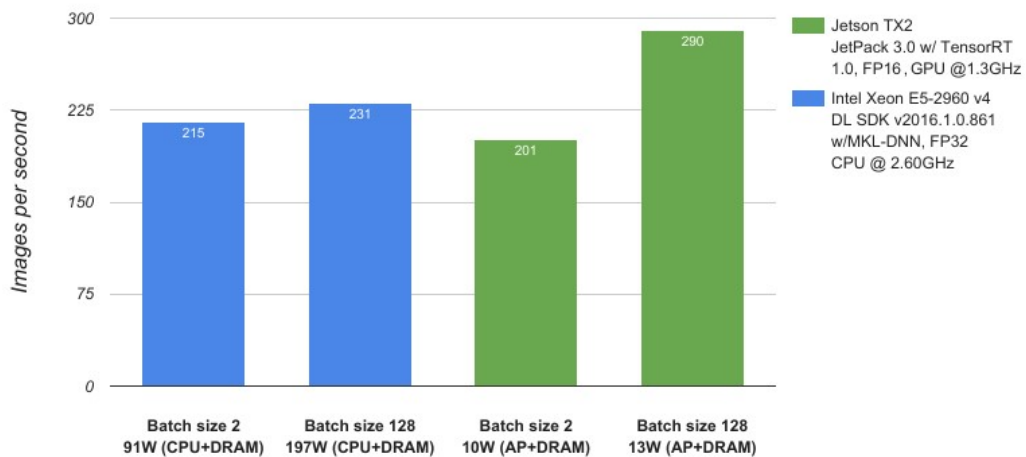
JETSON TX2 MODULE

This is an AI supercomputer on a module, powered by NVIDIA Pascal™ architecture. Best of all, it packs this performance into a small, power-efficient form factor that's ideal for intelligent edge devices like robots, drones, smart cameras, and portable medical devices. It supports all the features of the Jetson TX1 module while enabling bigger, more complex deep neural networks.





Inference Performance (GoogLeNet)





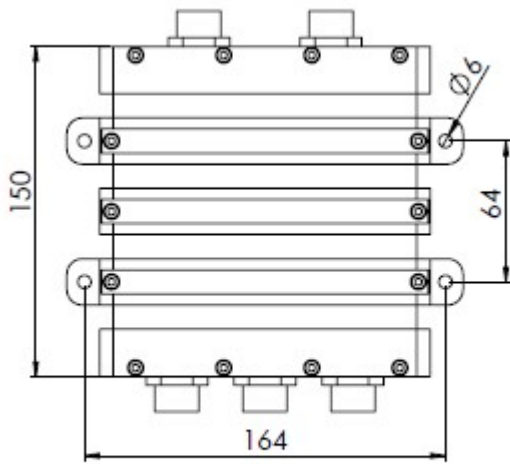
Specifications:

- CPU/RAM NVIDIA® Jetson™ TX2, HMP Dual Denver 2/2 MB L2 + Quad ARM® A57/2 MB L2, RAM 8GB LPDDR4
- GPU 2 TFLOP/s 256-core with NVIDIA Pascal™ Architecture
- USB 1x USB 3.0, 1x USB 2.0
- Network 2x Gigabit (10/100/1000) Ports
- GPIO 4x GPIO
- Display 1x HDMI
- Audio 1x Stereo Output Audio
- Serial 2x RS-232/485
- Misc 2x CAN2.0b
- Storage 32GB eMMC, 128GB SSD
- Power Input +9V to 36V DC

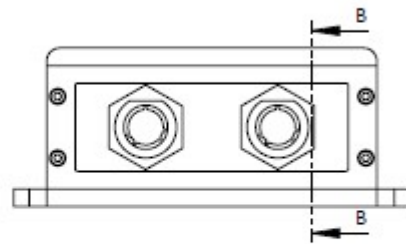
Environmental

- Operating Temperature: -30 deg. C to 70 deg. C
- Storage Temperature: -40 deg. C to 85 deg. C
- Operating Humidity: 5% to 95% (Non Condensing)
- IP67 Water dust proof, anti-corrosion housing
- MIL-STD-810G and MIL-STD-461G compliant
- D38999 type military connectors

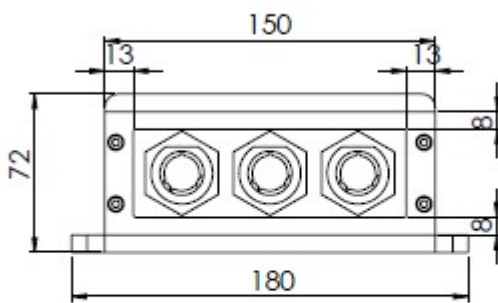
Mechanical



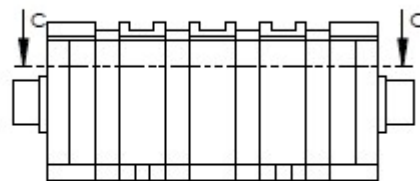
TOP VIEW



REAR VIEW



FRONT VIEW



SIDE VIEW